

# VEVA

# 11



## LOCATION

1777 Veva Boulevard, Building 11  
Blue Bell, Pennsylvania 19422

## SPECIFICATIONS

Floors: 3  
Total Square Feet: 22,183  
Parking Ratio: 4/1000 SF  
Floor Plate: +/- 7,400

## FEATURES

Outdoor Collaborative Spaces  
Easy Accessibility  
On-site WiFi  
Smaller Floor Plate for Improved Glass Line  
Close Proximity to Major Highways and Transit  
Convenient to Restaurants and Shopping  
Access to 6,500 Sq. Ft. Amenity Center at VEVA 16

## CONTACT

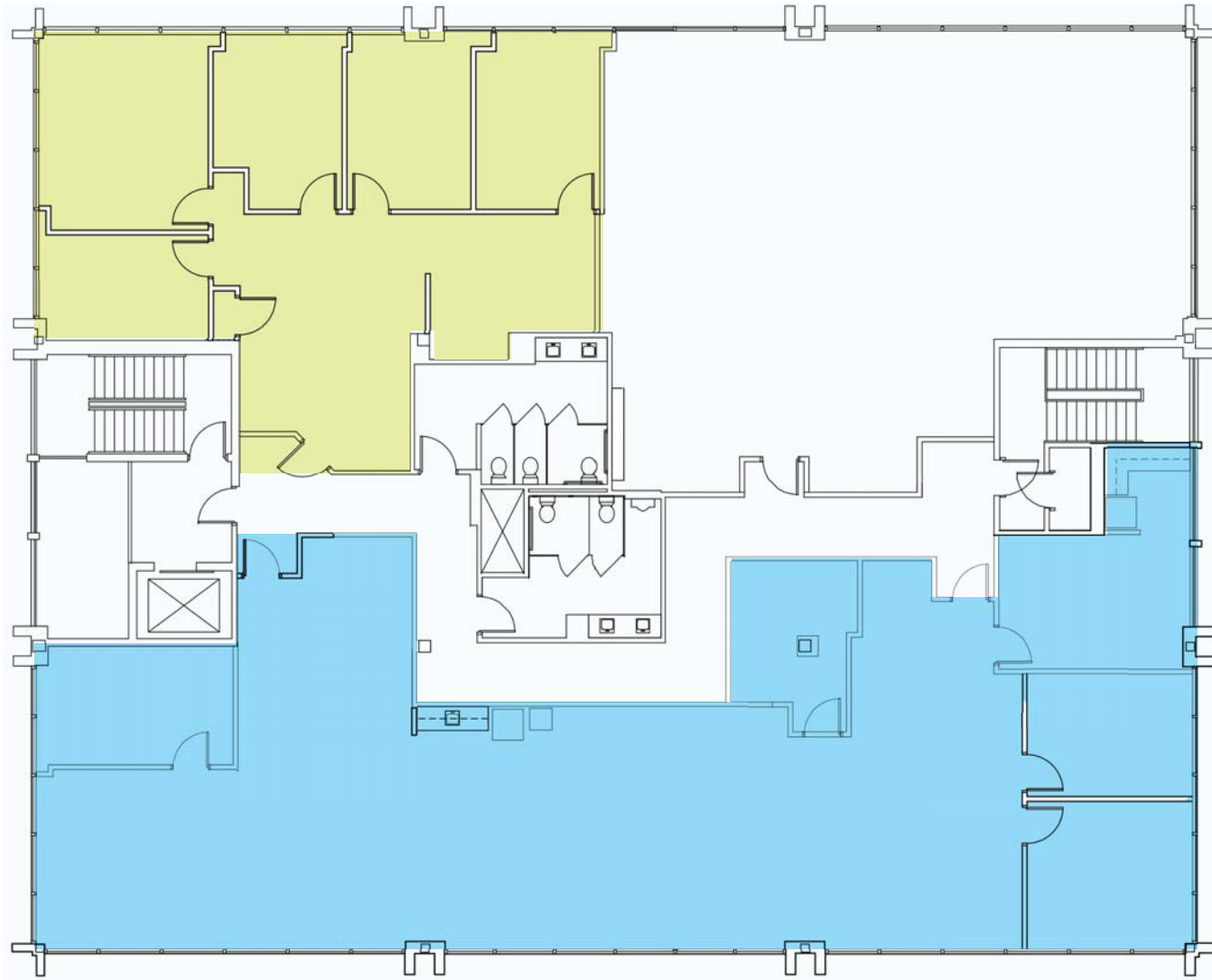
Lee Paulding  
610.980.7000  
[lpaulding@keystonepropertygroup.com](mailto:lpaulding@keystonepropertygroup.com)



VEVA 11  
AVAILABLE  
SPACE

2<sup>ND</sup> FLOOR  
● 1,834+/- SF  
● 3,765+/- SF

LEE PAULDING  
lpaulding@keystonepropertygroup.com  
610.980.7000





VEVA 11  
AVAILABLE  
SPACE

3<sup>RD</sup> FLOOR  
7,333+/- SF

LEE PAULDING  
lpaulding@keystonepropertygroup.com  
610.980.7000

